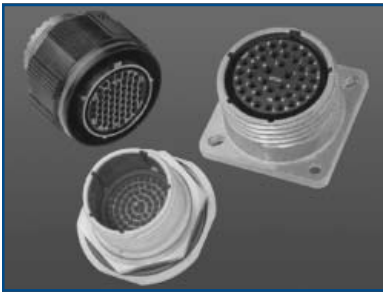


Subminiature Cylindrical, cont.

Amphe-Lite™, Non-MS Commercial 38999 Type

Reference Catalog 12-094



APPLICATION	STANDARDS/REQUIREMENTS	COUPLING/MOUNTING	CONTACT TERMINATION	PERFORMANCE ENVIRON./ELECT.
AL Series Commercial 38999, Series III type connector for higher performance industrial usage.	Offers 38999 type high performance capabilities for severe environment applications, yet is cost effective enough for general duty and non-environmental use.	Threaded coupling. Quickly, completely mates in one 360° turn of the coupling nut. Self locking - lockwiring is eliminated. Universal mounting holes for front or rear mounting, locksmith metal keying to aid in blind mating.	Crimp termination. Recessed pins (100% scoop-proof feature minimizes contact damage).	Operating temp. from -55°C to +125°C. IP67 rating for environmental sealing. Class F provides excellent EMI shielding. Class U provides a non-conductive finish. Composite shells resist severe corrosion. Operating voltage to 900 VAC (RMS) at sea level.
MARKETS				
<ul style="list-style-type: none"> • Communications • Automotive 			<ul style="list-style-type: none"> • Medical Equipment 	

OPTIONAL FEATURES

- 3 shell styles, 59 insert patterns.
- Twinax, coax, filter contacts and fiber optic termini can be incorporated - ideal for communications equipment.
- Ground plane version and high decoupling version available.

T-Line Series, with MIL-DTL-38999 Series III Inserts

Reference Pyle Bulletin TL-100



APPLICATION	STANDARDS/REQUIREMENTS	COUPLING/MOUNTING	CONTACT TERMINATION	PERFORMANCE ENVIRON./ELECT.
T-Series High performance connector with smallest subminiature size and lightweight but rugged design.	Utilizes MIL-DTL-38999 inserts and standard M39029/56/58 series contacts.	Push-pull coupling and 2 key polarization.	Crimp termination.	Operating temp. from -65°C to +200°C. IP67 rating for environmental sealing. Operating voltage to 400 VAC (RMS) at sea level.
MARKETS				
<ul style="list-style-type: none"> • Military Aerospace • Military Vehicles 			<ul style="list-style-type: none"> • Commercial Aircraft • Medical Equipment 	

OPTIONAL FEATURES

- 4 shell styles, 2 insert patterns with sizes 20 and 22 contacts.
- Stainless steel or aluminum shells.
- Variety of shell finishes.
- Lanyard release applications available.
- High voltage versions available.

348 Series, MIL-C-81511 Series I & II

Reference Catalog 12-093



APPLICATION	STANDARDS/REQUIREMENTS	COUPLING/MOUNTING	CONTACT TERMINATION	PERFORMANCE ENVIRON./ELECT.
348 Series M81511 For general duty requirements. Series II is standard length, Series I is longer shell with recessed pins.	MS versions are approved to MIL-C-81511 Series I & II	3 point bayonet coupling and 5 key/keyway mating	Crimp termination. Series I has recessed pins (100% scoop-proof feature minimizes contact damage).	Operating temp. from -55°C to +200°C. IP67 rating for environmental sealing. Operating voltage to 600 VAC (RMS) at sea level.
MARKETS				
<ul style="list-style-type: none"> • Military Aerospace • Military Vehicles 			<ul style="list-style-type: none"> • Commercial Aircraft • Medical Equipment 	

OPTIONAL FEATURES

- 4 shell styles available.
- Series I with longer shells, recessed pins offers 28 insert patterns.
- Series II with standard shells offers 16 insert patterns.
- Shielded coax contacts available.

For further information on Subminiature Connectors within this brochure, see the following subjects (listed in Table of Contents):

- Filter/Transient Protection Products
- Fiber Optic Products
- Hermetics
- Breakaway/Quick Disconnect Connectors
- Coax, Twinax, Triax and Quadrax Contacts
- Press-Fit 38999 Connectors for PCB Attachment
- MIL-STD-1553 Data Bus Products
- Flex Termination Assemblies