

Filter/Transient Protection

Amphenol offers great versatility in interconnection products for EMI and EMP protection of sensitive circuits. Amphenol Filter connectors offer the advantage of internal housing of the filter device within a wide range of connector packages - virtually all major MIL-Spec cylindricals and rectangular series. Housing the filter protection within the connector eliminates costly and bulky exterior discrete protection devices.

It is recommended that the user analyze system requirements for EMI protection in the following areas:

- Working voltage
- Desired attenuation at a given frequency level
- Peak voltage
- Any special capacitance limitations

EMI/EMP Filter Protection connectors are available within all the MIL-Spec Series of cylindrical connectors including:

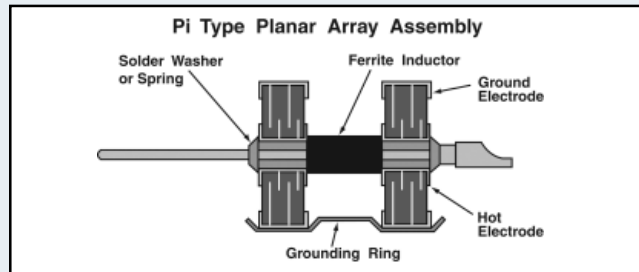
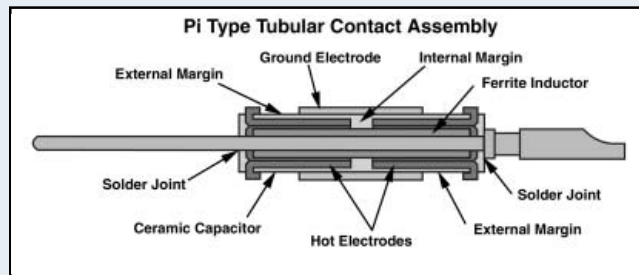
- MIL-DTL-38999
- MIL-C-5015
- MIL-C-26482
- MIL-C-27599
- MIL-C-83723
- MIL-C-26500

Filters also available in Rectangular Connectors:

- MIL-DTL-24308 D-Sub
- MIL-DTL-83513 Micro D
- ARINC 404/600
- DOD-83527 Rack and Panel
- MIL-DTL-83733 Rack and Panel

State of the Art Protection from Effects of EMI/EMP

Amphenol Filter Connectors utilize two manufacturing technologies to provide protection in VHF, UHF, HF and other custom filter ranges:



Select the option for the interference threat; couple with a connector package to protect your sensitive circuits. Or give Amphenol your custom shell design requirements - unique filter connector packaging can be designed.



FTV/FCTV
Subminiature Tri-Start,
MIL-DTL-38999 Series III,
Metal or Composite shells
with Filter Protection*



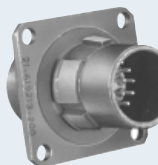
FJT
Subminiature JT,
MIL-DTL-38999 Series II
with Filter Protection



FLJT
Subminiature LJT,
MIL-DTL-38999 Series I
with Filter Protection



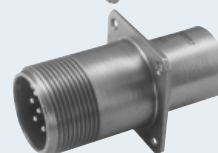
FSJT
Subminiature SJT,
Non-MS 38999 Type
with Filter Protection



FBL
MIL-DTL-38999 Series IV
(Available in receptacle
configurations only)



FPT
Miniature PT, MIL-C-26482
with Filter Protection



Filter "AN"
MIL-C-5015 Type
with Filter Protection



Filter Rectangular ARINC 400/600

Filter Adapters
For cost effective installation
between existing plugs and
receptacles.

Filter/Transient Protection Connectors are available in all the styles shown here plus other configurations for protecting circuitry from EMI and EMP:

- EMP protection utilizing diodes
- EMP protection utilizing metal oxide varistors (MOV's)
- Programmable EMI filters
- Filter plug connectors
- Filtered hermetic connectors
- Filter connectors with electrostatic discharge (ESD) protection
- Header assemblies
- Filtered D-Sub MIL-DTL-24308
- Micro D-Sub MIL-DTL-83513

*Filter protection is also available in Amphe-Lite Industrial 38999 type connectors. See Subminiature Cylindrical section.