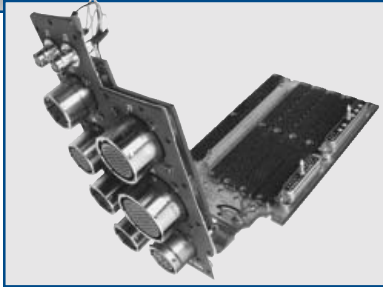
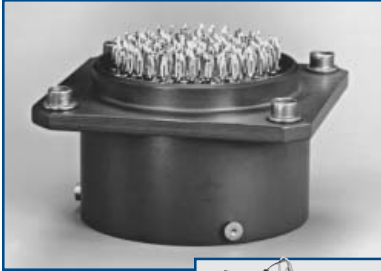


Cylindrical Connector Attachment to Printed Circuit Boards

Press Fit Connectors with Compliant Pins

Reference Product Data Sheet 188.
Reference Catalog 12-170.



Press Fit Connectors on Printed Circuit Board

APPLICATION	STANDARDS REQUIREMENTS	COUPLING/ MOUNTING	CONTACT TERMINATION	PERFORMANCE ENVIRON./ELECT.
MIL-DTL-38999 Series I, II or III connectors with compliant pin contacts for solderless mounting on printed circuit boards.	Meet MIL-DTL-38999 Series I, II or III requirements. Compliant pins engage the plated through-holes in the PC board without the need for soldering. Provides high speed, low cost board assembly.	Accommodate boards with minimum of 0.090 inch thickness and 0.040 ±.003 plated through holes. Insertion force for mounting the connector on boards is 7 to 16 lbs. per contact.	Both pin and socket contacts are available in any MIL-DTL-38999 Series I, II or III insert pattern having contact size 16, 20 or 22D.	Connector performances are compatible with MIL-DTL-38999 Series I, II or III. Solderless mounting eliminates soldering thermal stress, provides improved board processing time and provides easy board reparability.

OPTIONAL FEATURES

- Connectors are sold completely assembled or are available fully pre-assembled on a backplane assembly. See backplanes, page 55.

MARKETS

- All markets of MIL-DTL-38999 connectors.

Cylindrical Connectors with PC Tail Contacts

Reference Catalog 12-170.

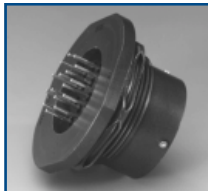


PC Tails in MIL-DTL-38999

APPLICATION	STANDARDS REQUIREMENTS	COUPLING/ MOUNTING	CONTACT TERMINATION	PERFORMANCE ENVIRON./ELECT.
Cylindrical connectors with PC tail contacts for solder mounting on printed circuit boards.	Meet Mil-Spec requirements of the cylindrical connector used. Available in: MIL-DTL-38999 Series I, II, III; MIL-C-26482 Series 1 and 2; MIL-C-5015. Also available in MIL-C-5015 type GT series with reverse bayonet coupling.	Cylindrical connectors in jam nut (D hole) or panel mount (four hole) styles are solder mounted to printed circuit boards. Considerations must be made for length of PCB tails and any mechanical methods needed to stabilize the board.	Insert arrangements within the 3 connector families incorporate PCB contacts in sizes 16, 20 and 22D. Most popularly used arrangements are shown with pin-out dimensional layouts in Catalog 12-170, Cylindrical Connectors for PCB application.	Connector performances are compatible with the Mil-spec requirements of the connector type used.



PC Tails in MIL-C-5015



PC Tails in MIL-C-26482



PC Tails in GT Series



PC Tails and Coax Contacts in 38999 Connector with Alignment Disc

Alignment Discs provide simplified installation of contacts to PCB boards. They optimize electrical circuit separation and provide protection during shipment.

OPTIONAL FEATURES

- Commonly used tail diameters and tail stick-out dimensions are given in Catalog 12-170 to assist in designing. Other custom designs are available.
- PCB tails for 38999 and 26482 cylindricals are standard with gold plating over nickel. PCB tails for 5015 cylindricals are standard with silver over copper. Pre-tinned contacts with a 60/40 lead-tin alloy are also available.
- PCB contacts are available in coax, twinax, and triax types.
- Alignment discs are available.
- Header assemblies and flex assemblies are also optional accessories. See next page.

MARKETS

- All markets of MIL-DTL-38999 connectors.