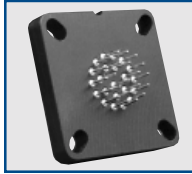
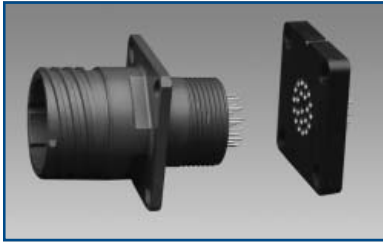


Cylindrical Connector Attachment to Printed Circuit Boards

Universal Header Assemblies

Reference Product Data Sheet 169, Catalog 12-120, and Catalog 12-170.



APPLICATION	STANDARDS/ REQUIREMENTS	COUPLING/ MOUNTING	CONTACT TERMINATION	PERFORMANCE ENVIRON./ELECT.
Provides for easy separation and easy termination of connectors when attaching to flex print or printed circuit boards Available to fit all major cylindrical mil-spec and ARINC connectors. Provides the user with time and cost saving potentials.	Accessory product for connector attachment to PC boards. Provides time and cost savings, especially when installing and testing of more expensive connectors such as EMI Filters.	Can be attached to connectors with standard flange placement; or shell modifications may be recommended. Mounting to panel with cinch nuts. Attaching screws can be incorporated.	Incorporates a short pin & socket crimp contact assembly. The tail of the contact accommodates standard thru-hole diameter and thickness of the flex or PCB board materials. 3 PCB stickout dimensions are available.	Performance is in accordance with the applicable connector specification. Body is molded from Torlon or PPS. Electrical engagement areas of the header contact are plated with .00003 in. min. of gold over .00005 in. min. of nickel.

OPTIONAL FEATURES

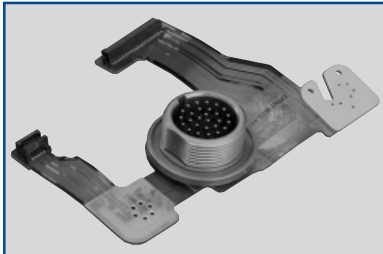
- Can be vapor phase or wave soldered to the PCB or flex prior to the receipt of a cylindrical connector or an ARINC rectangular connector.
- Can be installed to standard connectors, allowing for electrical testing that would adversely affect the sensitive diodes, MOV's or capacitors in the EMI/EMP connectors. Expensive connector assemblies can be easily removed from and reattached to the header assembly as manufacturing processes dictate.
- Accommodates up to 150 pins in an ARINC arrangement (see page 57 for ARINC 404 and ARINC 600 rack and panel connectors).
- Accommodates up to 128 pins in a cylindrical pattern.

MARKETS

- Military Aerospace
- Commercial Aircraft
- Military Vehicles
- Industrial
- Communications
- Medical Equipment

Flex Termination Assemblies

Reference ACT brochure, AAO Catalog 12-170 or consult your local Amphenol sales office for further information.



APPLICATION	STANDARDS/ REQUIREMENTS	COUPLING/ MOUNTING	CONTACT TERMINATION	PERFORMANCE ENVIRON./ELECT.
Flex termination assemblies for attaching cylindrical connectors to printed circuit board. Available through Amphenol division of ACT, Advanced Circuit Technologies. They eliminate the need to purchase and attach individual pins or connectors, thus promoting system automation, reducing space requirements and lowering installation costs.	For use with MIL-DTL-38999, MIL-C-5015 and MIL-C-26482 cylindrical connectors. Also used for EMI/EMP connectors.	Flex circuits plug into a printed circuit board and create a self-locking terminal pad which eliminates the need for an additional interconnect to the PCB.	Designed to meet specific length, current carrying capacity and to fit the precise geometric shape of the connector to board package.	Connector performances are compatible with the Mil-spec requirements of the connector type used. Sculptured® Flexible Circuits have built-in terminations which eliminate the failures associated with crimped or soldered-on contacts, and geometrically fit the tight space requirements within a unit. They are strong and rigid, yet the circuit body is highly flexible. Each circuit on the flex is easily tested and quickly connected.

OPTIONAL FEATURES

- Custom designed to fit varied connector requirements.
- Conductor and termination thicknesses and widths can be varied, even on the same trace.

Also see flex termination on UHD Module/Backplane connectors (page 50).

MARKETS

- All connector markets