



2M MICRO MINIATURE PYTHON

LOW PROFILE EMI/RFI PLUG AND BACKSHELL COMBO

BENEFITS:

SPACE SAVINGS

- + This plug and backshell combo design saves space, with a minimum height and superior EMI performance.

EASY MAINTENANCE

- + The rear removable cover makes it easy to cut wires and remove contacts for easy maintenance.

SIMPLE ASSEMBLY

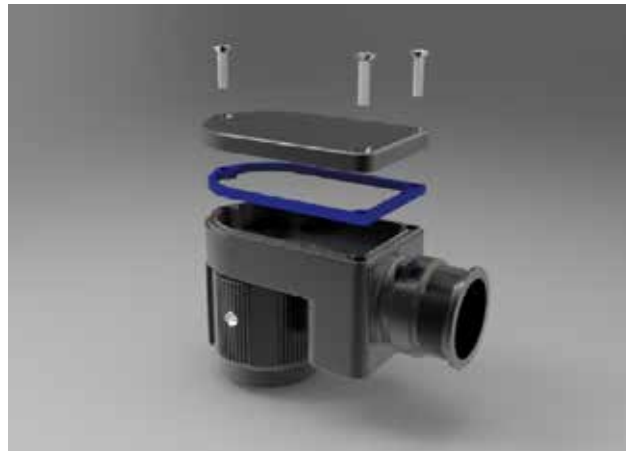
- + Assembles with crimp or solder cup size 23 contacts.
- + Multiple cable entry options available for each connector size (rear opening).

KEY ROTATIONS

- + All key rotations are available as well as several connector clockings (rotating main key).

OVERVIEW

2M Python is a low profile EMI/RFI plug and backshell combo. This innovative combination reduces space requirements without compromising on ruggedness or shielding performance. Available in 2M 801 Series, 804 Series, and 805 Series, Python assemblies provide superior low profile cable routing and 2M Micro-miniature connector performance all-in-one.



CONTACT US:

Anthony Annunziata

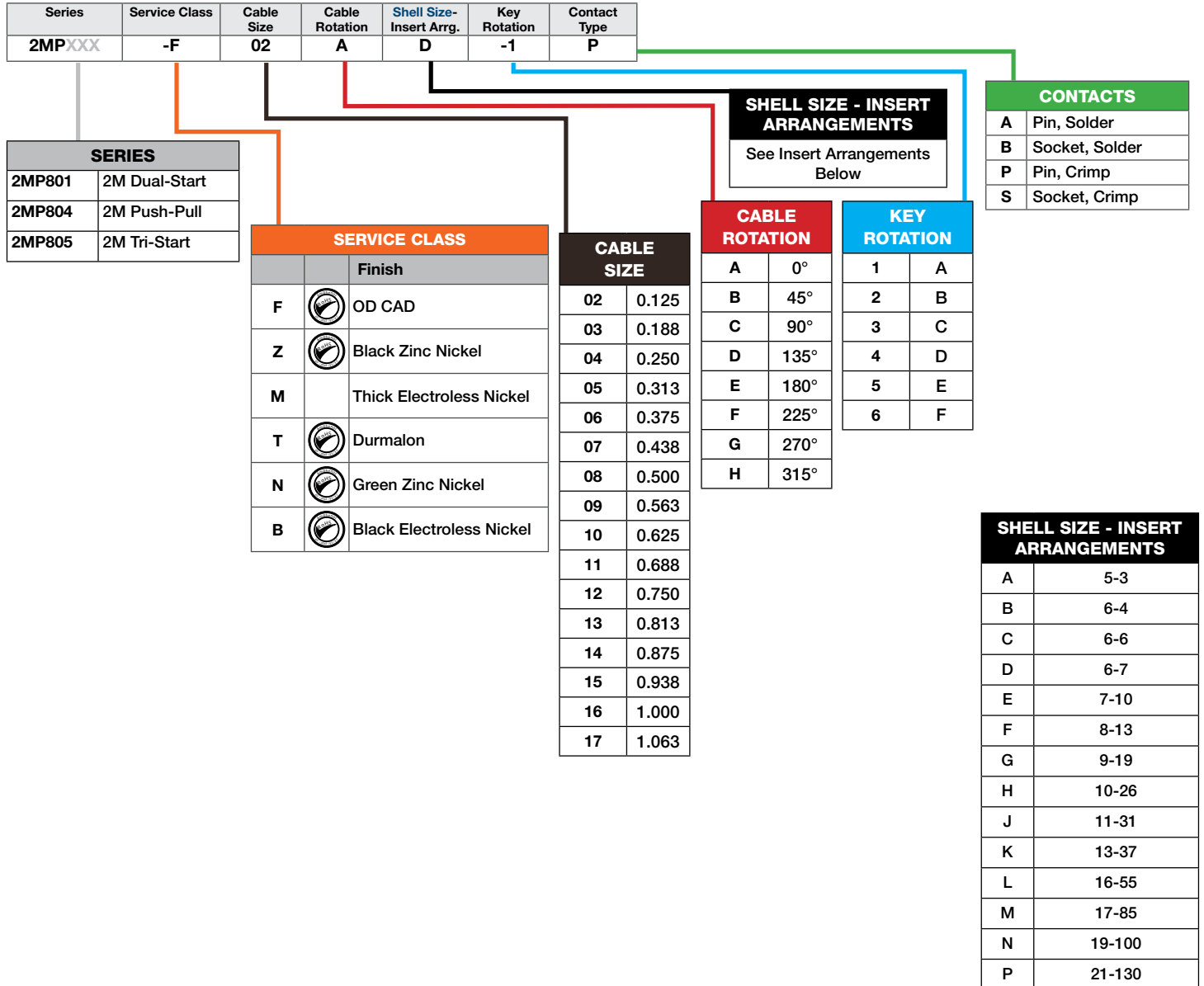
E-mail: aannunziata@amphenol-aa.com

Phone: 607-563-5532

2M MICRO MINIATURE PYTHON

LOW PROFILE EMI/RFI PLUG AND BACKSHELL COMBO

How to Order



CONTACT US:
 Anthony Annunziata
 E-mail: aannunziata@amphenol-ao.com
 Phone: 607-563-5532