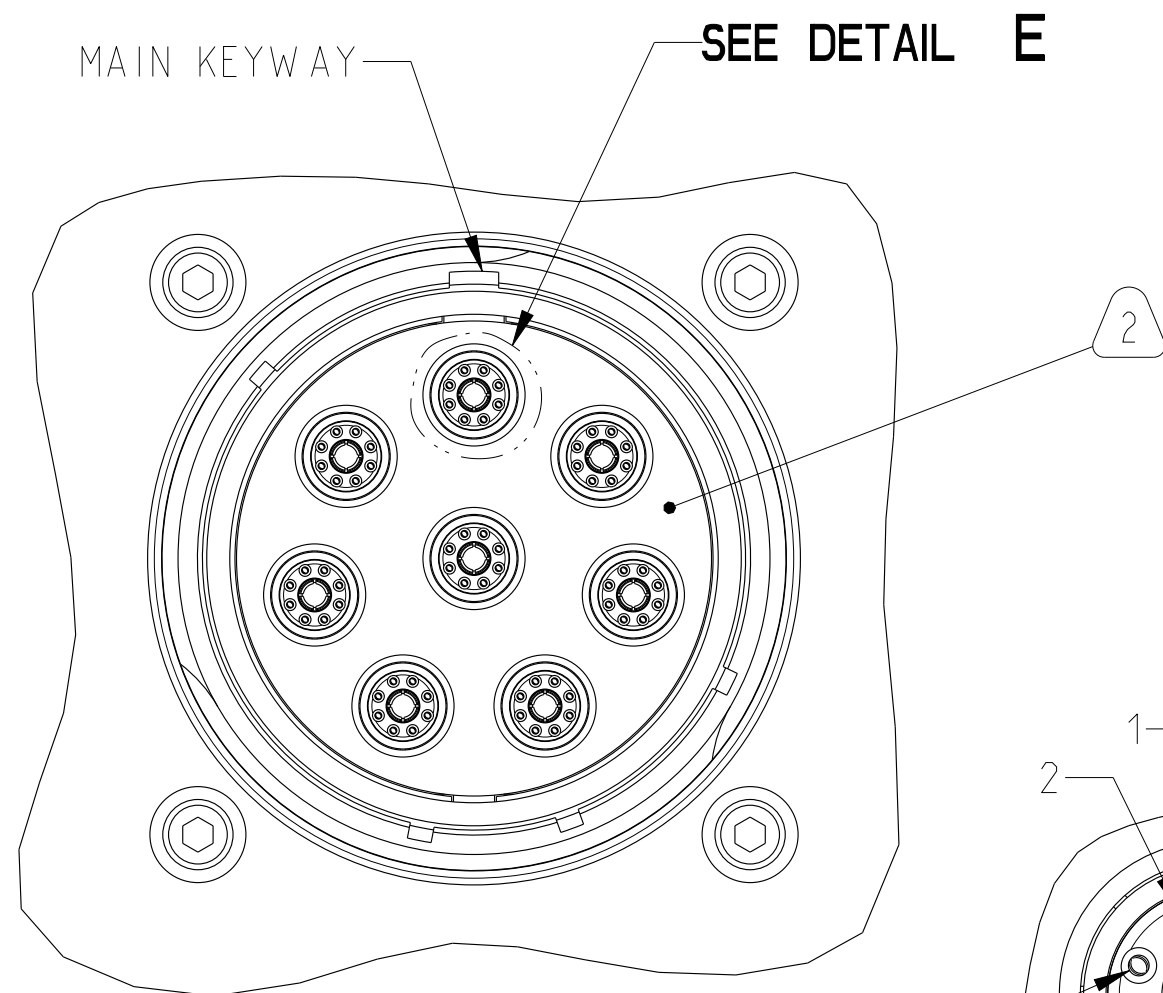
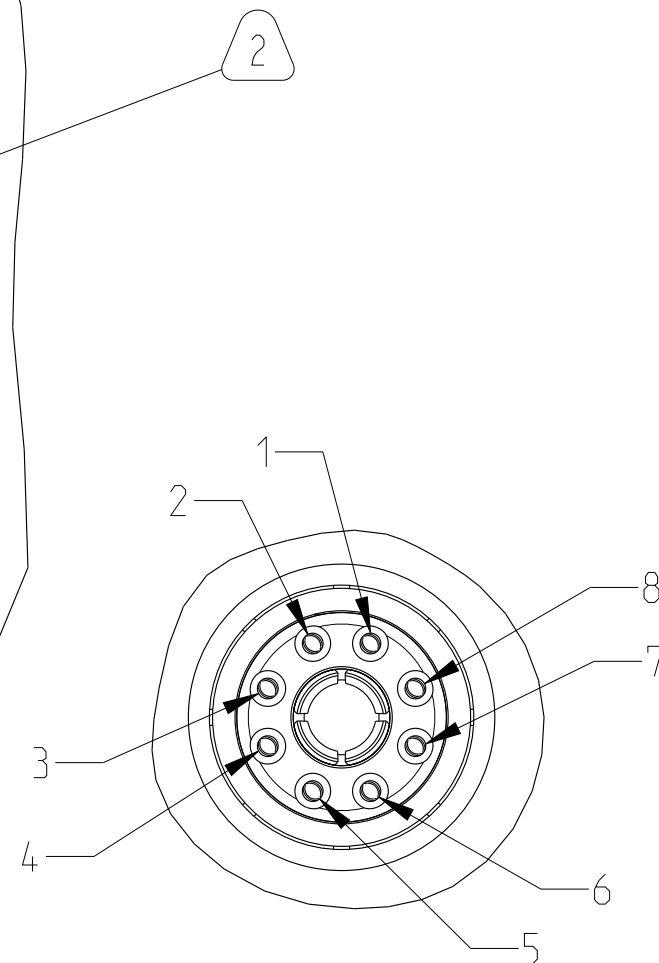


I/O CHART

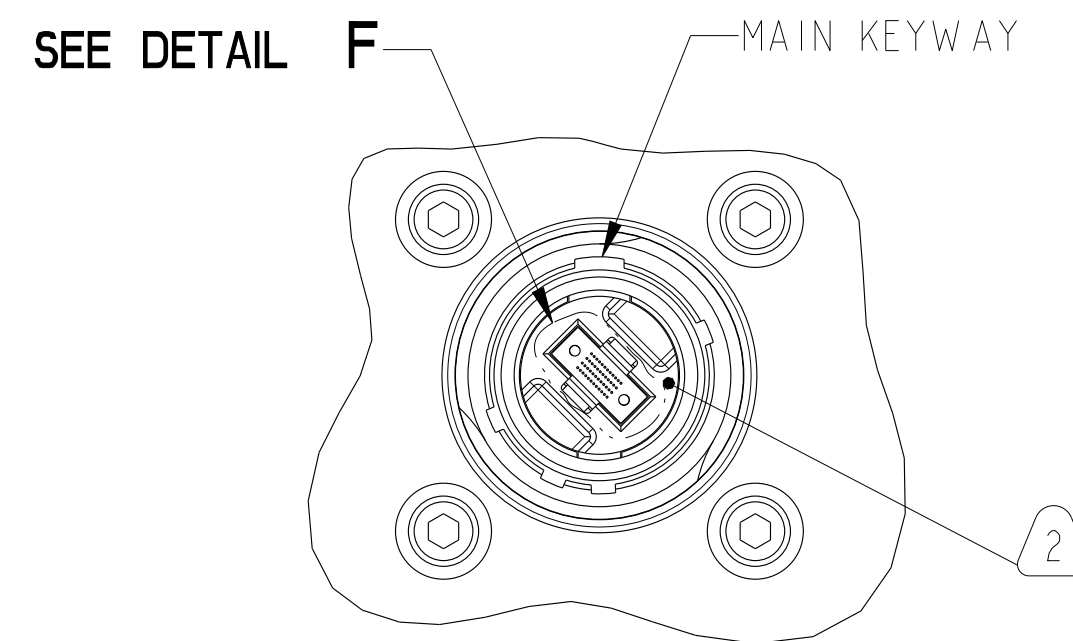
CONNECTOR DESCRIPTION	PIN NO.	DATA DIRECTION	SIGNAL NAME
J1 (POWER) 15-4P KEYING "N"	A	IN	28VDC_IN
	B	OUT	28VDC_RTN
	C	--	SAFETY GROUND / CHASSIS
	D	--	NOT CONNECTED
	SHELL	--	CHASSIS
J8 (DEBUG) 13-35P KEYING "N" WITH METAL CAP	1	OUT	RS232_CONSOLE_TX
	2	IN	RS232_CONSOLE_RX
	3	--	RS232_CONSOLE_GND
	4	IN	DEBUG_JTAG_TCLK
	5	OUT	DEBUG_JTAG_TDO
	6	IN	DEBUG_JTAG_TDI
	7	IN	DEBUG_JTAG_TTMS
	8	IN	DEBUG_I2C_SCL
	9	BI	DEBUG_I2C_SDA
	10	--	NOT CONNECTED
	11	--	NOT CONNECTED
	12	BI	DEBUG_CPU_USB_D+
	13	BI	DEBUG_CPU_USB_D-
	14	BI	DEBUG_CPU_1GBASET_DA+
	15		DEBUG_CPU_1GBASET_DA-
	16		DEBUG_CPU_1GBASET_DB+
	17		DEBUG_CPU_1GBASET_DB-
	18		DEBUG_CPU_1GBASET_DC+
	19		DEBUG_CPU_1GBASET_DC-
	20		DEBUG_CPU_1GBASET_DD+
	21		DEBUG_CPU_1GBASET_DD-
	22	--	NOT CONNECTED
SHELL	--	CHASSIS	
J9 (STATUS/RESET) 9-35P KEYING "N"	1	IN	SWITCHBOX_RESET
	2	OUT	POWERSUPPLY_STATUS
	3	OUT	CHASSIS_STATUS
	4	OUT	TEMPERATURE_WARNING_STATUS
	5	--	RESET_RTN
	6	--	NOT CONNECTED
	SHELL	--	CHASSIS



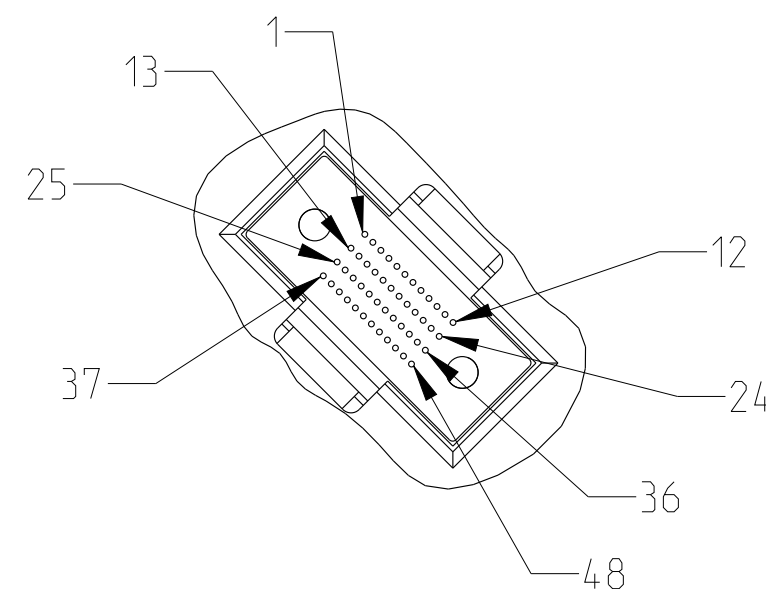
DETAIL D
J5, J6 AND J7
SCALE 2.000



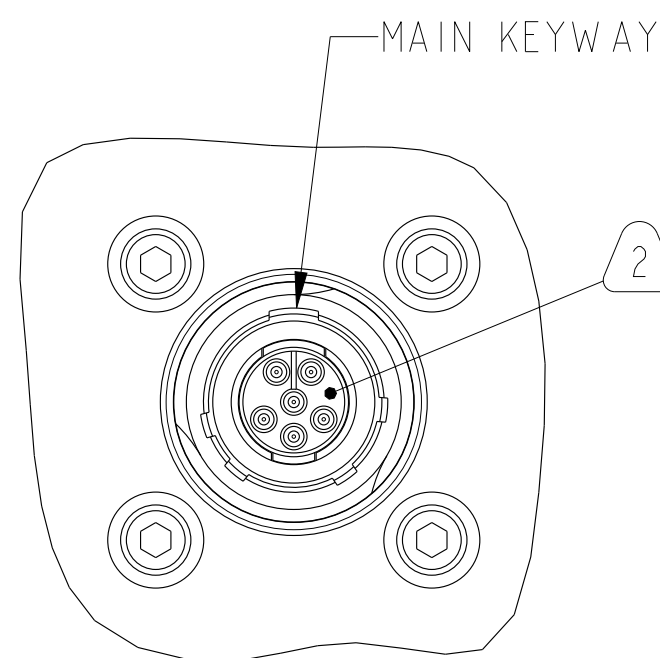
DETAIL E
OCTONET
SCALE 6.000



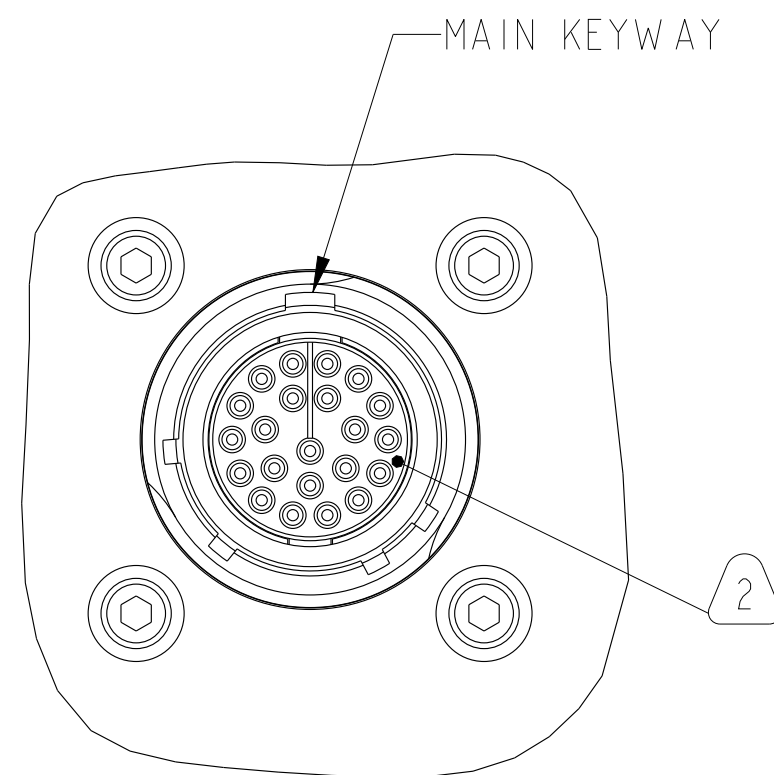
DETAIL B
J2A, J2B, J3A, J3B, J4A AND J4B
SCALE 2.000



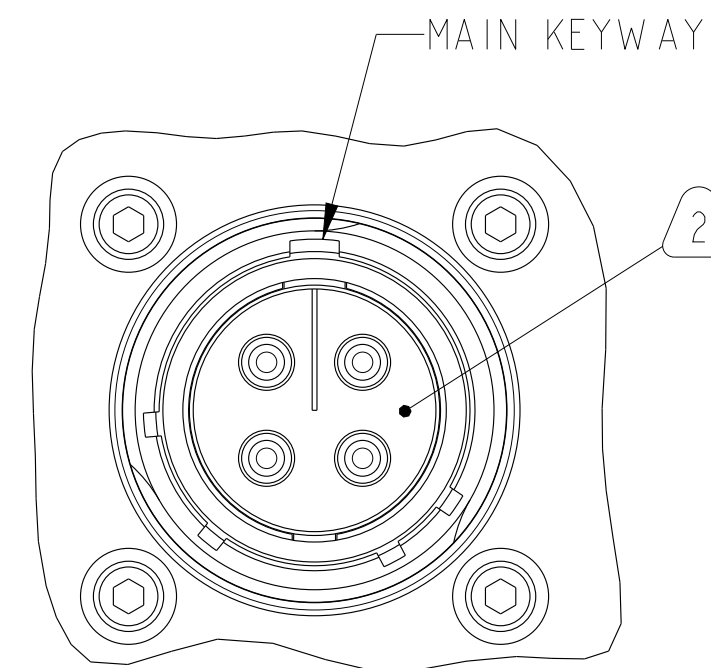
DETAIL F
48F MT
SCALE 6.000



DETAIL G
J9
SCALE 2.000



DETAIL C
J8
PROTECTION CAP NOT SHOWN FOR CLARITY
SCALE 2.000



DETAIL A
J1
SCALE 2.000

SEE SHEET 8

NOTES:

THE USE OF THIS DOCUMENT IS UNLIMITED. HOWEVER, DOCUMENTS REFERENCED HEREON MAY CONTAIN LIMITED RIGHTS DATA.

RELEASED / Dec. 19 2019, 2:06:09 PM

DOCUMENT NO. CF-020011-433

SHEET 2 OF 8

REV. A

SIZE C	CAGE CODE 77820	DOCUMENT NO. CF-020011-433	REV. A
SCALE: 0.5	REF: CF-020011-000	SHEET 2 OF 8	

DOCUMENT NO. CF-020011-433
 SHEET 2 OF 8
 REV. A
 Eng PDM Information For Reference Only
 REVISION A 2

I/O CHART (CONTINUED)

CONNECTOR DESCRIPTION	PIN NO.	DATA DIRECTION	SIGNAL NAME
J2A (CPU1) 11-1S 48F MT KEYING "N"	1	OUT	PORT1_10GBASESR_TX
	2		PORT2_10GBASESR_TX
	3		PORT3_10GBASESR_TX
	4		PORT4_10GBASESR_TX
	5-8	--	NOT CONNECTED
	9	IN	PORT4_10GBASESR_RX
	10		PORT3_10GBASESR_RX
	11		PORT2_10GBASESR_RX
	12		PORT1_10GBASESR_RX
	13	OUT	PORT5_10GBASESR_TX
	14		PORT6_10GBASESR_TX
	15		PORT7_10GBASESR_TX
	16		PORT8_10GBASESR_TX
	17-20	--	NOT CONNECTED
	21	IN	PORT8_10GBASESR_RX
	22		PORT7_10GBASESR_RX
	23		PORT6_10GBASESR_RX
	24		PORT5_10GBASESR_RX
	25	OUT	PORT9_1GBASESX_TX
	26		PORT10_1GBASESX_TX
	27		PORT11_1GBASESX_TX
	28		PORT12_1GBASESX_TX
	29-32	--	NOT CONNECTED
	33	IN	PORT12_1GBASESX_RX
	34		PORT11_1GBASESX_RX
	35		PORT10_1GBASESX_RX
	36		PORT9_1GBASESX_RX
	37	OUT	PORT13_1GBASESX_TX
38	PORT14_1GBASESX_TX		
39	PORT15_1GBASESX_TX		
40	PORT16_1GBASESX_TX		
41-44	--	NOT CONNECTED	
45	IN	PORT16_1GBASESX_RX	
46		PORT15_1GBASESX_RX	
47		PORT14_1GBASESX_RX	
48		PORT13_1GBASESX_RX	
SHELL	--	CHASSIS	

I/O CHART (CONTINUED)

CONNECTOR DESCRIPTION	PIN NO.	DATA DIRECTION	SIGNAL NAME
J2B (CPU1) 11-1S 48F MT KEYING "A"	1	OUT	PORT17_10GBASESR_TX
	2		PORT18_10GBASESR_TX
	3		PORT19_10GBASESR_TX
	4		PORT20_10GBASESR_TX
	5-8	--	NOT CONNECTED
	9	IN	PORT20_10GBASESR_RX
	10		PORT19_10GBASESR_RX
	11		PORT18_10GBASESR_RX
	12		PORT17_10GBASESR_RX
	13	OUT	PORT21_10GBASESR_TX
	14		PORT22_10GBASESR_TX
	15		PORT23_10GBASESR_TX
	16		PORT24_10GBASESR_TX
	17-20	--	NOT CONNECTED
	21	IN	PORT24_10GBASESR_RX
	22		PORT23_10GBASESR_RX
	23		PORT22_10GBASESR_RX
	24		PORT21_10GBASESR_RX
	25	OUT	PORT25_1GBASESX_TX
	26		PORT26_1GBASESX_TX
	27		PORT27_1GBASESX_TX
	28		PORT28_1GBASESX_TX
	29-32	--	NOT CONNECTED
	33	IN	PORT28_1GBASESX_RX
	34		PORT27_1GBASESX_RX
	35		PORT26_1GBASESX_RX
	36		PORT25_1GBASESX_RX
	37	OUT	PORT29_1GBASESX_TX
38	PORT30_1GBASESX_TX		
39	PORT31_1GBASESX_TX		
40	PORT32_1GBASESX_TX		
41-44	--	NOT CONNECTED	
45	IN	PORT32_1GBASESX_RX	
46		PORT31_1GBASESX_RX	
47		PORT30_1GBASESX_RX	
48		PORT29_1GBASESX_RX	
SHELL	--	CHASSIS	

I/O CHART (CONTINUED)

CONNECTOR DESCRIPTION	PIN NO.	DATA DIRECTION	SIGNAL NAME
J3A (CPU2) 11-1S 48F MT KEYING "B"	1	OUT	PORT33_10GBASESR_TX
	2		PORT34_10GBASESR_TX
	3		PORT35_10GBASESR_TX
	4		PORT36_10GBASESR_TX
	5-8	--	NOT CONNECTED
	9	IN	PORT36_10GBASESR_RX
	10		PORT35_10GBASESR_RX
	11		PORT34_10GBASESR_RX
	12		PORT33_10GBASESR_RX
	13	OUT	PORT37_10GBASESR_TX
	14		PORT38_10GBASESR_TX
	15		PORT39_10GBASESR_TX
	16		PORT40_10GBASESR_TX
	17-20	--	NOT CONNECTED
	21	IN	PORT40_10GBASESR_RX
	22		PORT39_10GBASESR_RX
	23		PORT38_10GBASESR_RX
	24		PORT37_10GBASESR_RX
	25	OUT	PORT41_1GBASESX_TX
	26		PORT42_1GBASESX_TX
	27		PORT43_1GBASESX_TX
	28		PORT44_1GBASESX_TX
	29-32	--	NOT CONNECTED
	33	IN	PORT44_1GBASESX_RX
	34		PORT43_1GBASESX_RX
	35		PORT42_1GBASESX_RX
	36		PORT41_1GBASESX_RX
	37	OUT	PORT45_1GBASESX_TX
38	PORT46_1GBASESX_TX		
39	PORT47_1GBASESX_TX		
40	PORT48_1GBASESX_TX		
41-44	--	NOT CONNECTED	
45	IN	PORT48_1GBASESX_RX	
46		PORT47_1GBASESX_RX	
47		PORT46_1GBASESX_RX	
48		PORT45_1GBASESX_RX	
SHELL	--	CHASSIS	

SEE SHEET 8

NOTES:

THE USE OF THIS DOCUMENT IS UNLIMITED. HOWEVER, DOCUMENTS REFERENCED HEREON MAY CONTAIN LIMITED RIGHTS DATA.

RELEASED / Dec. 19 2019, 2:06:10 PM

DOCUMENT NO. CF-020011-433

SHEET 3 OF 8

REV. A

SIZE C	CAGE CODE 77820	DOCUMENT NO. CF-020011-433	REV. A
SCALE: 0.5	REF: CF-020011-000	SHEET 3 OF 8	

DOCUMENT NO. CF-020011-433 SHEET 3 OF 8 REV. A

I/O CHART (CONTINUED)

CONNECTOR DESCRIPTION	PIN NO.	DATA DIRECTION	SIGNAL NAME
J3B (CPU2) 11-1S 48F MT KEYING "C"	1	OUT	PORT49_10GBASESR_TX
	2		PORT50_10GBASESR_TX
	3		PORT51_10GBASESR_TX
	4		PORT52_10GBASESR_TX
	5-8	--	NOT CONNECTED
	9	IN	PORT52_10GBASESR_RX
	10		PORT51_10GBASESR_RX
	11		PORT50_10GBASESR_RX
	12		PORT49_10GBASESR_RX
	13	OUT	PORT53_10GBASESR_TX
	14		PORT54_10GBASESR_TX
	15		PORT55_10GBASESR_TX
	16		PORT56_10GBASESR_TX
	17-20	--	NOT CONNECTED
	21	IN	PORT56_10GBASESR_RX
	22		PORT55_10GBASESR_RX
	23		PORT54_10GBASESR_RX
	24		PORT53_10GBASESR_RX
	25	OUT	PORT57_1GBASESX_TX
	26		PORT58_1GBASESX_TX
	27		PORT59_1GBASESX_TX
	28		PORT60_1GBASESX_TX
	29-32	--	NOT CONNECTED
	33	IN	PORT60_1GBASESX_RX
	34		PORT59_1GBASESX_RX
	35		PORT58_1GBASESX_RX
	36		PORT57_1GBASESX_RX
	37	OUT	PORT61_1GBASESX_TX
38	PORT62_1GBASESX_TX		
39	PORT63_1GBASESX_TX		
40	PORT64_1GBASESX_TX		
41-44	--	NOT CONNECTED	
45	IN	PORT64_1GBASESX_RX	
46		PORT63_1GBASESX_RX	
47		PORT62_1GBASESX_RX	
48		PORT61_1GBASESX_RX	
SHELL	--	CHASSIS	

I/O CHART (CONTINUED)

CONNECTOR DESCRIPTION	PIN NO.	DATA DIRECTION	SIGNAL NAME
J4A (TUNER) 11-1S 48F MT KEYING "D"	1	OUT	PORT65_10GBASESR_TX
	2		PORT66_10GBASESR_TX
	3		PORT67_10GBASESR_TX
	4		PORT68_10GBASESR_TX
	5-8	--	NOT CONNECTED
	9	IN	PORT68_10GBASESR_RX
	10		PORT67_10GBASESR_RX
	11		PORT66_10GBASESR_RX
	12		PORT65_10GBASESR_RX
	13	OUT	PORT69_10GBASESR_TX
	14		PORT70_10GBASESR_TX
	15		PORT71_10GBASESR_TX
	16		PORT72_10GBASESR_TX
	17-20	--	NOT CONNECTED
	21	IN	PORT72_10GBASESR_RX
	22		PORT71_10GBASESR_RX
	23		PORT70_10GBASESR_RX
	24		PORT69_10GBASESR_RX
	25	OUT	PORT73_10GBASESR_TX
	26		PORT74_10GBASESR_TX
	27		PORT75_1GBASESX_TX
	28		PORT76_1GBASESX_TX
	29-32	--	NOT CONNECTED
	33	IN	PORT76_1GBASESX_RX
	34		PORT75_1GBASESX_RX
	35		PORT74_10GBASESR_RX
	36		PORT73_10GBASESR_RX
	37	OUT	PORT77_1GBASESX_TX
38	PORT78_1GBASESX_TX		
39	PORT79_1GBASESX_TX		
40	PORT80_1GBASESX_TX		
41-44	--	NOT CONNECTED	
45	IN	PORT80_1GBASESX_RX	
46		PORT79_1GBASESX_RX	
47		PORT78_1GBASESX_RX	
48		PORT77_1GBASESX_RX	
SHELL	--	CHASSIS	

I/O CHART (CONTINUED)

CONNECTOR DESCRIPTION	PIN NO.	DATA DIRECTION	SIGNAL NAME
J4B (TUNER) 11-1S 48F MT KEYING "E"	1	OUT	PORT81_10GBASESR_TX
	2		PORT82_10GBASESR_TX
	3		PORT83_10GBASESR_TX
	4		PORT84_10GBASESR_TX
	5-8	--	NOT CONNECTED
	9	IN	PORT84_10GBASESR_RX
	10		PORT83_10GBASESR_RX
	11		PORT82_10GBASESR_RX
	12		PORT81_10GBASESR_RX
	13	OUT	PORT85_10GBASESR_TX
	14		PORT86_10GBASESR_TX
	15		PORT87_10GBASESR_TX
	16		PORT88_10GBASESR_TX
	17-20	--	NOT CONNECTED
	21	IN	PORT88_10GBASESR_RX
	22		PORT87_10GBASESR_RX
	23		PORT86_10GBASESR_RX
	24		PORT85_10GBASESR_RX
	25	OUT	PORT89_10GBASESR_TX
	26		PORT90_10GBASESR_TX
	27		PORT91_10GBASESR_TX
	28		PORT92_10GBASESR_TX
	29-32	--	NOT CONNECTED
	33	IN	PORT92_10GBASESR_RX
	34		PORT91_10GBASESR_RX
	35		PORT90_10GBASESR_RX
	36		PORT89_10GBASESR_RX
	37	OUT	PORT93_10GBASESR_TX
38	PORT94_10GBASESR_TX		
39	PORT95_10GBASESR_TX		
40	PORT96_10GBASESR_TX		
41-44	--	NOT CONNECTED	
45	IN	PORT96_10GBASESR_RX	
46		PORT95_10GBASESR_RX	
47		PORT94_10GBASESR_RX	
48		PORT93_10GBASESR_RX	
SHELL	--	CHASSIS	

SEE SHEET 8

NOTES:

THE USE OF THIS DOCUMENT IS UNLIMITED. HOWEVER, DOCUMENTS REFERENCED HEREON MAY CONTAIN LIMITED RIGHTS DATA.

RELEASED / Dec. 19 2019, 2:06:10 PM

CF-020011-433

SHEET 4 OF 8

REV. A

SIZE C	CAGE CODE 77820	DOCUMENT NO. CF-020011-433	REV. A
SCALE: 0.5	REF: CF-020011-000	SHEET 4 OF 8	

CF-020011-433 SHEET 4 OF 8 REV. A

I/O CHART (CONTINUED)

CONNECTOR DESCRIPTION	PIN NO.	DATA DIRECTION	SIGNAL NAME
J5 (10GBASE-T) 25-8S KEYING "N"	A-1	BI	PORT97_10GBASET_DA+
	A-2		PORT97_10GBASET_DA-
	A-3		PORT97_10GBASET_DB+
	A-4		PORT97_10GBASET_DB-
	A-5		PORT97_10GBASET_DC+
	A-6		PORT97_10GBASET_DC-
	A-7		PORT97_10GBASET_DD+
	A-8		PORT97_10GBASET_DD-
	B-1		PORT98_10GBASET_DA+
	B-2		PORT98_10GBASET_DA-
	B-3		PORT98_10GBASET_DB+
	B-4		PORT98_10GBASET_DB-
	B-5		PORT98_10GBASET_DC+
	B-6		PORT98_10GBASET_DC-
	B-7		PORT98_10GBASET_DD+
	B-8		PORT98_10GBASET_DD-
	C-1		PORT99_10GBASET_DA+
	C-2		PORT99_10GBASET_DA-
	C-3		PORT99_10GBASET_DB+
	C-4		PORT99_10GBASET_DB-
	C-5		PORT99_10GBASET_DC+
	C-6		PORT99_10GBASET_DC-
	C-7		PORT99_10GBASET_DD+
	C-8		PORT99_10GBASET_DD-
	D-1		PORT100_10GBASET_DA+
	D-2		PORT100_10GBASET_DA-
	D-3		PORT100_10GBASET_DB+
	D-4		PORT100_10GBASET_DB-
	D-5		PORT100_10GBASET_DC+
	D-6		PORT100_10GBASET_DC-
	D-7		PORT100_10GBASET_DD+
	D-8		PORT100_10GBASET_DD-

I/O CHART (CONTINUED)

CONNECTOR DESCRIPTION	PIN NO.	DATA DIRECTION	SIGNAL NAME
J5 (10GBASE-T) 25-8S KEYING "N"	E-1	BI	PORT101_10GBASET_DA+
	E-2		PORT101_10GBASET_DA-
	E-3		PORT101_10GBASET_DB+
	E-4		PORT101_10GBASET_DB-
	E-5		PORT101_10GBASET_DC+
	E-6		PORT101_10GBASET_DC-
	E-7		PORT101_10GBASET_DD+
	E-8		PORT101_10GBASET_DD-
	F-1		PORT102_10GBASET_DA+
	F-2		PORT102_10GBASET_DA-
	F-3		PORT102_10GBASET_DB+
	F-4		PORT102_10GBASET_DB-
	F-5		PORT102_10GBASET_DC+
	F-6		PORT102_10GBASET_DC-
	F-7		PORT102_10GBASET_DD+
	F-8		PORT102_10GBASET_DD-
	G-1		PORT103_10GBASET_DA+
	G-2		PORT103_10GBASET_DA-
	G-3		PORT103_10GBASET_DB+
	G-4		PORT103_10GBASET_DB-
	G-5		PORT103_10GBASET_DC+
	G-6		PORT103_10GBASET_DC-
	G-7		PORT103_10GBASET_DD+
	G-8		PORT103_10GBASET_DD-
	H-1		PORT104_10GBASET_DA+
	H-2		PORT104_10GBASET_DA-
	H-3		PORT104_10GBASET_DB+
	H-4		PORT104_10GBASET_DB-
	H-5		PORT104_10GBASET_DC+
	H-6		PORT104_10GBASET_DC-
	H-7		PORT104_10GBASET_DD+
	H-8		PORT104_10GBASET_DD-
A OUTER	--	CHASSIS	
B OUTER			
C OUTER			
D OUTER			
E OUTER			
F OUTER			
G OUTER			
H OUTER			
SHELL			

SEE SHEET 8

NOTES:

THE USE OF THIS DOCUMENT IS UNLIMITED. HOWEVER, DOCUMENTS REFERENCED HEREON MAY CONTAIN LIMITED RIGHTS DATA.

RELEASED / Dec. 19 2019, 2:06:10 PM

DOCUMENT NO. CF-020011-433

SHEET 5 OF 8

REV. A

SIZE C	CAGE CODE 77820	DOCUMENT NO. CF-020011-433	REV. A
SCALE: 0.5		REF: CF-020011-000	SHEET 5 OF 8

DOCUMENT NO. CF-020011-433 SHEET 5 OF 8 REV. A

I/O CHART (CONTINUED)

CONNECTOR DESCRIPTION	PIN NO.	DATA DIRECTION	SIGNAL NAME
J6 (1GBASE-T) 25-8S KEYING "A"	A-1	BI	PORT105_1GBASET_DA+
	A-2		PORT105_1GBASET_DA-
	A-3		PORT105_1GBASET_DB+
	A-4		PORT105_1GBASET_DB-
	A-5		PORT105_1GBASET_DC+
	A-6		PORT105_1GBASET_DC-
	A-7		PORT105_1GBASET_DD+
	A-8		PORT105_1GBASET_DD-
	B-1		PORT106_1GBASET_DA+
	B-2		PORT106_1GBASET_DA-
	B-3		PORT106_1GBASET_DB+
	B-4		PORT106_1GBASET_DB-
	B-5		PORT106_1GBASET_DC+
	B-6		PORT106_1GBASET_DC-
	B-7		PORT106_1GBASET_DD+
	B-8		PORT106_1GBASET_DD-
	C-1		PORT107_1GBASET_DA+
	C-2		PORT107_1GBASET_DA-
	C-3		PORT107_1GBASET_DB+
	C-4		PORT107_1GBASET_DB-
	C-5		PORT107_1GBASET_DC+
	C-6		PORT107_1GBASET_DC-
	C-7		PORT107_1GBASET_DD+
	C-8		PORT107_1GBASET_DD-
	D-1		PORT108_1GBASET_DA+
	D-2		PORT108_1GBASET_DA-
	D-3		PORT108_1GBASET_DB+
	D-4		PORT108_1GBASET_DB-
	D-5		PORT108_1GBASET_DC+
	D-6		PORT108_1GBASET_DC-
	D-7		PORT108_1GBASET_DD+
	D-8		PORT108_1GBASET_DD-

I/O CHART (CONTINUED)

CONNECTOR DESCRIPTION	PIN NO.	DATA DIRECTION	SIGNAL NAME
J6 (1GBASE-T) 25-8S KEYING "A"	E-1	BI	PORT109_1GBASET_DA+
	E-2		PORT109_1GBASET_DA-
	E-3		PORT109_1GBASET_DB+
	E-4		PORT109_1GBASET_DB-
	E-5		PORT109_1GBASET_DC+
	E-6		PORT109_1GBASET_DC-
	E-7		PORT109_1GBASET_DD+
	E-8		PORT109_1GBASET_DD-
	F-1		PORT110_1GBASET_DA+
	F-2		PORT110_1GBASET_DA-
	F-3		PORT110_1GBASET_DB+
	F-4		PORT110_1GBASET_DB-
	F-5		PORT110_1GBASET_DC+
	F-6		PORT110_1GBASET_DC-
	F-7		PORT110_1GBASET_DD+
	F-8		PORT110_1GBASET_DD-
	G-1		PORT111_1GBASET_DA+
	G-2		PORT111_1GBASET_DA-
	G-3		PORT111_1GBASET_DB+
	G-4		PORT111_1GBASET_DB-
	G-5		PORT111_1GBASET_DC+
	G-6		PORT111_1GBASET_DC-
	G-7		PORT111_1GBASET_DD+
	G-8		PORT111_1GBASET_DD-
	H-1		PORT112_1GBASET_DA+
	H-2		PORT112_1GBASET_DA-
	H-3		PORT112_1GBASET_DB+
	H-4		PORT112_1GBASET_DB-
	H-5		PORT112_1GBASET_DC+
	H-6		PORT112_1GBASET_DC-
	H-7		PORT112_1GBASET_DD+
	H-8		PORT112_1GBASET_DD-
A OUTER	--	CHASSIS	
B OUTER			
C OUTER			
D OUTER			
E OUTER			
F OUTER			
G OUTER			
H OUTER			
SHELL			

SEE SHEET 8

NOTES:

THE USE OF THIS DOCUMENT IS UNLIMITED. HOWEVER, DOCUMENTS REFERENCED HEREON MAY CONTAIN LIMITED RIGHTS DATA.

RELEASED / Dec. 19 2019, 2:06:10 PM

DOCUMENT NO. CF-020011-433

SHEET 6 OF 8

REV. A

SIZE C	CAGE CODE 77820	DOCUMENT NO. CF-020011-433	REV. A
SCALE: 0.5		REF: CF-020011-000	SHEET 6 OF 8

DOCUMENT NO. CF-020011-433
SHEET 6 OF 8
REV. A
VERSION 2
Eng PDM Information For Reference Only

I/O CHART (CONTINUED)

CONNECTOR DESCRIPTION	PIN NO.	DATA DIRECTION	SIGNAL NAME
J7 (1GBASE-T) 25-8S KEYING "B"	A-1	BI	PORT113_1GBASET_DA+
	A-2		PORT113_1GBASET_DA-
	A-3		PORT113_1GBASET_DB+
	A-4		PORT113_1GBASET_DB-
	A-5		PORT113_1GBASET_DC+
	A-6		PORT113_1GBASET_DC-
	A-7		PORT113_1GBASET_DD+
	A-8		PORT113_1GBASET_DD-
	B-1		PORT114_1GBASET_DA+
	B-2		PORT114_1GBASET_DA-
	B-3		PORT114_1GBASET_DB+
	B-4		PORT114_1GBASET_DB-
	B-5		PORT114_1GBASET_DC+
	B-6		PORT114_1GBASET_DC-
	B-7		PORT114_1GBASET_DD+
	B-8		PORT114_1GBASET_DD-
	C-1		PORT115_1GBASET_DA+
	C-2		PORT115_1GBASET_DA-
	C-3		PORT115_1GBASET_DB+
	C-4		PORT115_1GBASET_DB-
	C-5		PORT115_1GBASET_DC+
	C-6		PORT115_1GBASET_DC-
	C-7		PORT115_1GBASET_DD+
	C-8		PORT115_1GBASET_DD-
D-1	PORT116_1GBASET_DA+		
D-2	PORT116_1GBASET_DA-		
D-3	PORT116_1GBASET_DB+		
D-4	PORT116_1GBASET_DB-		
D-5	PORT116_1GBASET_DC+		
D-6	PORT116_1GBASET_DC-		
D-7	PORT116_1GBASET_DD+		
D-8	PORT116_1GBASET_DD-		

I/O CHART (CONTINUED)

CONNECTOR DESCRIPTION	PIN NO.	DATA DIRECTION	SIGNAL NAME
J7 (1GBASE-T) 25-8S KEYING "B"	E-1	BI	PORT117_1GBASET_DA+
	E-2		PORT117_1GBASET_DA-
	E-3		PORT117_1GBASET_DB+
	E-4		PORT117_1GBASET_DB-
	E-5		PORT117_1GBASET_DC+
	E-6		PORT117_1GBASET_DC-
	E-7		PORT117_1GBASET_DD+
	E-8		PORT117_1GBASET_DD-
	F-1		PORT118_1GBASET_DA+
	F-2		PORT118_1GBASET_DA-
	F-3		PORT118_1GBASET_DB+
	F-4		PORT118_1GBASET_DB-
	F-5		PORT118_1GBASET_DC+
	F-6		PORT118_1GBASET_DC-
	F-7		PORT118_1GBASET_DD+
	F-8		PORT118_1GBASET_DD-
	G-1		PORT119_1GBASET_DA+
	G-2		PORT119_1GBASET_DA-
	G-3		PORT119_1GBASET_DB+
	G-4		PORT119_1GBASET_DB-
	G-5		PORT119_1GBASET_DC+
	G-6		PORT119_1GBASET_DC-
	G-7		PORT119_1GBASET_DD+
	G-8		PORT119_1GBASET_DD-
H-1	PORT120_1GBASET_DA+		
H-2	PORT120_1GBASET_DA-		
H-3	PORT120_1GBASET_DB+		
H-4	PORT120_1GBASET_DB-		
H-5	PORT120_1GBASET_DC+		
H-6	PORT120_1GBASET_DC-		
H-7	PORT120_1GBASET_DD+		
H-8	PORT120_1GBASET_DD-		
A OUTER	--	CHASSIS	
B OUTER			
C OUTER			
D OUTER			
E OUTER			
F OUTER			
G OUTER			
H OUTER			
SHELL			

SEE SHEET 8

NOTES:

THE USE OF THIS DOCUMENT IS UNLIMITED. HOWEVER, DOCUMENTS REFERENCED HEREON MAY CONTAIN LIMITED RIGHTS DATA.

RELEASED / Dec. 19 2019, 2:06:10 PM

DOCUMENT NO. CF-020011-433

SHEET 7 OF 8

REV. A

SIZE C	CAGE CODE 77820	DOCUMENT NO. CF-020011-433	REV. A
SCALE: 0.5		REF: CF-020011-000	SHEET 7 OF 8

DOCUMENT NO. CF-020011-433
REV. A
SHEET 7 OF 8
VERSION 2
Eng PDM Information For Reference Only

CONNECTOR LIST

CONNECTOR DESIGNATOR	CONNECTOR PART NUMBER	CONTACT(S) USED	MATING CONNECTOR (OR EQUIVALENT)	MATING CONTACT (OR EQUIVALENT)
J1 POWER	CF-971354-04P	(4X) SIZE 12 PIN M39029/107-623	TV06RF-15-4S(LC)	SIZE 12 SOCKET M39029/106-617
J2A CPU1	CF-971322-01S	(1X) 48F MT FERRULE 12599 (1X) MT MALE KIT CF-198233-001	CF-594611-01P	48F MT FERRULE 12599 MT FEMALE KIT CF-198234-001
J2B CPU1	CF-971322-01H		CF-594611-01G	
J3A CPU2	CF-971322-01J		CF-594611-01I	
J3B CPU2	CF-971322-01L		CF-594611-01K	
J4A TUNER	CF-971322-01N		CF-594611-01M	
J4B TUNER	CF-971322-01T	CF-594611-01R		
J5 10GBASE-T	10-646402-612N	(8X) 21-032907-001 OCTONET, SOCKET	TV06RQF-25-8P(LC)	21-032904-021 OCTONET, PIN COMPATIBLE W/ PIC E6A3824 100OHM CABLE (OR EQUIVALENT)
J6 1GBASE-T	10-646402-612A		TV06RQF-25-8PA(LC)	
J7 1GBASE-T	10-646402-612B		TV06RQF-25-8PB(LC)	
J8 DEBUG	CF-971353-22P	(22X) SIZE 22D PIN M39029/107-620	TV06RF-13-35S(LC)	SIZE 22D SOCKET M39029/106-614
J9 STATUS/RESET	CF-971351-35P	(6X) SIZE 22D PIN M39029/107-620	TV06RF-9-35S(LC)	SIZE 22D SOCKET M39029/106-614

- 14. MARK LABEL WITH UNIQUE IDENTIFICATION (UID) PER MIL-STD-130N, CONSTRUCT #1. UID SHALL CONSIST OF MFG'S CAGE CODE (77820), MFG'S UNIQUE SERIAL NUMBER (SERIAL NUMBER PER 9-9172-3) AND CUSTOMER P/N (19CD0002-1). ATTACH ON INDICATED LOCATION.
- 13. STAMP IDENTIFICATION DESIGNATORS ON FRONT HOUSING IN WHITE COLOR. LOCATE APPROXIMATELY AS SHOWN. LETTER HEIGHT .150" MIN. STAMPING PER 9-3856-5.
- 12. ALL TX AND RX SPECIFIED ON I/O CHART ARE FROM THE PERSPECTIVE OF CF-020011-433 ASSEMBLY.
- 11. WEIGHT: 15 LBS MAX.
- 10. INDICATED SURFACE SHALL BE PAINT FREE FOR ELECTRICAL BONDING. PAINT FREE SURFACE SHALL BE COATED WITH CONDUCTIVE FINISH SUCH AS ALODINE OR IRIDITE, COLOR YELLOW.
- 9. ASSEMBLY HOUSINGS ARE ALUMINUM ALLOY PAINTED BLACK PER FED-STD-595, COLOR# 37038.
- 8. CONNECTOR SHELLS ARE ELECTROLESS NICKEL PLATED ALUMINUM ALLOY.
- 7. FIBER LINES SHALL BE 850nm SIGNAL COMPATIBLE 50/125 GRADED INDEX MULTIMODE FIBER.
- 6. PROCESS SPECS: 9-9172-3, 9-3856-5
- 5. MARKING ON LABEL MAY DIFFER FROM DRAWING BASED ON CUSTOMER SPECIFIC ORDER REQUIREMENTS.
- 4. PACKAGE PER PRODUCTION PROCESS SHEET.
- 3. MARK LABEL WITH "AMPHENOL", PART NUMBER AND 7 DIGIT SERIAL NUMBER AND ATTACH ON INDICATED SURFACE. SERIAL NUMBER PER 9-9172-3.

EXAMPLE:
AMPHENOL
CF-020011-433
1950003
- 2. FOR INSERT ARRANGEMENT, SEE FOLLOWING DOCUMENTS.
 - J1 CONNECTOR: L-21814-4
 - J2A, J2B, J3A, J3B, J4A AND J4B CONNECTORS: L-38711-M1
 - J5, J6 AND J7 CONNECTORS: LQ-21824-8
 - J8 CONNECTOR: L-21812-35
 - J9 CONNECTOR: L-21808-35

1. ASSEMBLY CONTAINS ELECTROSTATIC DISCHARGE (ESD) SENSITIVE COMPONENTS. ASSEMBLY SHALL BE HANDLED, PACKAGED, AND SHIPPED TO MEET REQUIREMENTS OF ANSI/ESD-S-20.20 AND IPC-610.

NOTES:

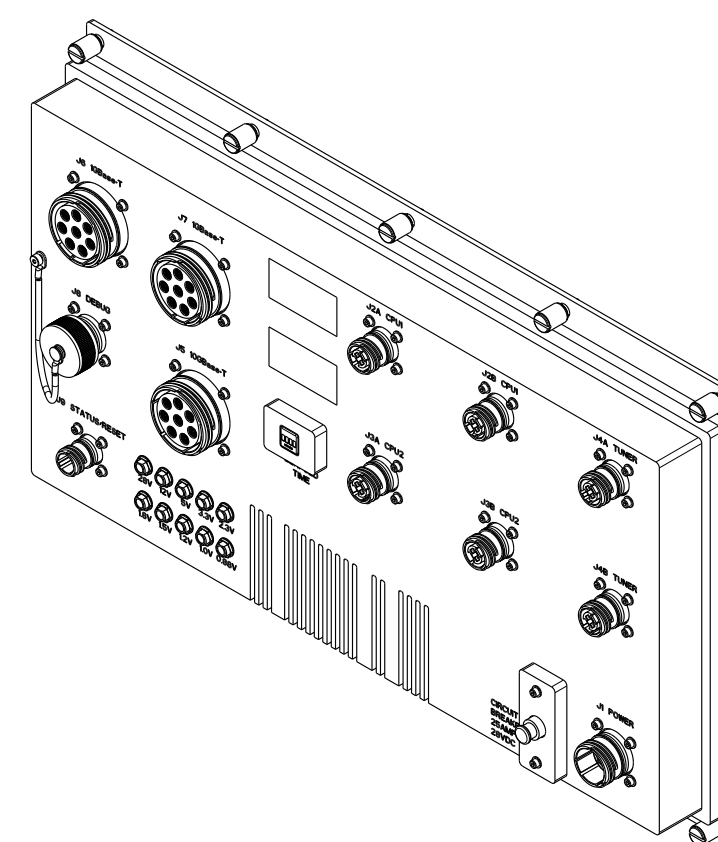
THE USE OF THIS DOCUMENT IS UNLIMITED. HOWEVER, DOCUMENTS REFERENCED HEREON MAY CONTAIN LIMITED RIGHTS DATA.

RELEASED / Dec. 19 2019, 2:06:10 PM

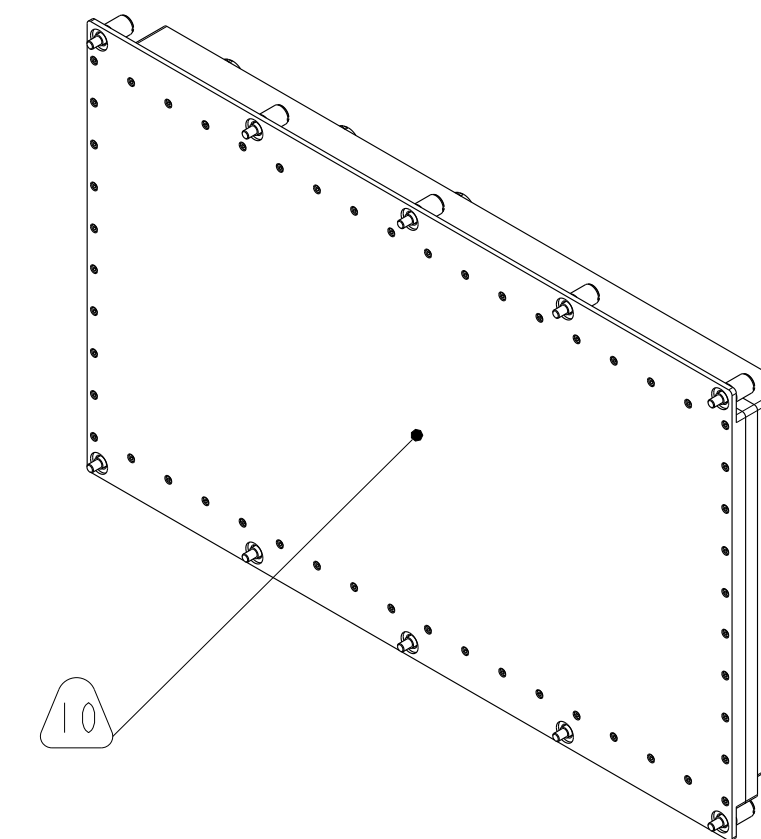
CF-020011-433

SHEET 8 OF 8

REV. A



FRONT ISOMETRIC VIEW
SCALE 0.250



REAR ISOMETRIC VIEW
SCALE 0.250

SIZE C	CAGE CODE 77820	DOCUMENT NO. CF-020011-433	REV. A
SCALE: 0.5		REF: CF-020011-000	SHEET 8 OF 8

DOCUMENT NO. CF-020011-433 SHEET 8 OF 8 REV. A

REVISION 2 REV. A Eng PDM Information For Reference Only SHEET 8 OF 8 DOCUMENT NO. CF-020011-433